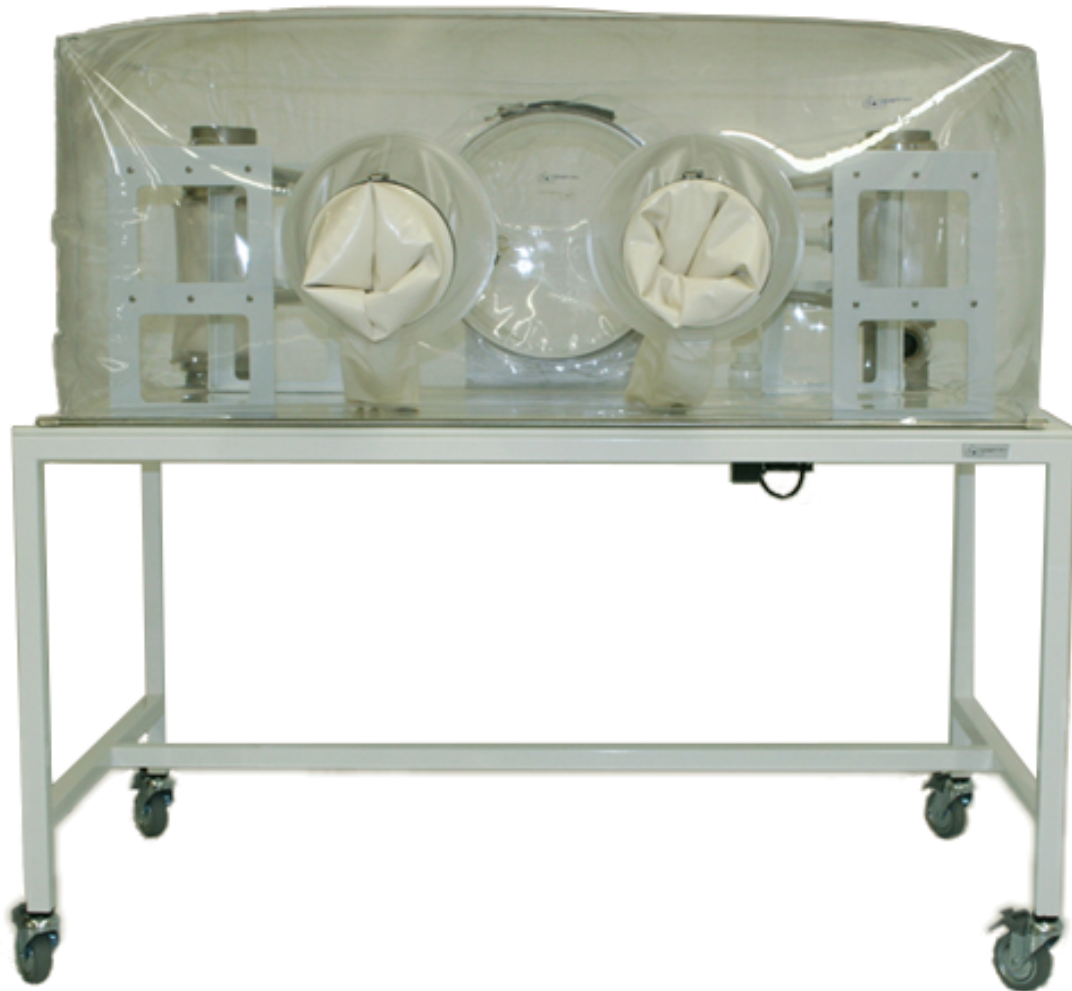


Class Biologically Clean softwall isolator starter lab



Class Biologically Clean flexible film (softwall) "Starter Lab" isolator systems provide researchers compatibility, quality control, quicker installation, better traceability and easier reorders! (Pictured above is a standard, positive pressure, single-tier isolator system.)

CBC's flexible film, germ-free "Starter Lab" includes either (1) Single-tier 5'x 2'x 2' Isolator System or (1) Double-tier 5'x 2'x 2' Isolator System with all hardware necessary for assembly.

Single-tier softwall isolator "Starter Lab" includes:

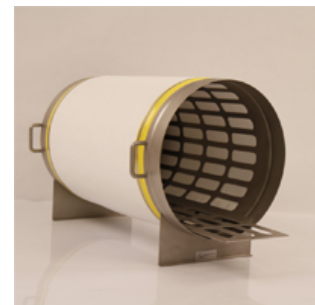
- 1 ½" steel powder coated single shelf frame to prevent bending or warping.
- HDPE tabletop with inserts for attaching isolator components.
- Two-way locking wheels.
- 5/8" PVC hold-down rod and SS clamps.
- Blower and manifold system.
- (1) 20 mil vinyl isolator.
- (1) 20 mil urethane floor mat protector for inside the isolator.
- (1) 3/8" closed cell foam pad for under isolator.
- (1) complete 5" diameter inlet filter & (1) complete 5" diameter outlet filter (includes filter media, filter covers, rubber bands and clamps). Note: Lower inlet port and upper outlet port can easily handle warm, moist air. Combined with our standard 5" filters (vs. competitive 3" filters), this design provides greater airflow and improves the isolator's living environment.
- (2) 2" neoprene stoppers.
- (1) Transfer port (size & type to your specifications)*.
- (1) Port to isolator neoprene band and clamp for sealing isolator to transfer port.
- (1) each of inside and outside transfer port caps.
- (1) Patent clamp for attaching outside port cap to transfer port.
- (1) inside rubber band for attaching inside transfer port cap.
- (1) pair of 12" diameter/8" glove port CBC glove extensions for better worker dexterity and less stress on isolator. (Note: Available without.)
- (1) pair of 15 mil Hypalon/CSM Dry Box Gloves with glove ring kit for attaching gloves to isolator (other types available).
- (2) 1" neoprene stoppers (other types available).
- (2) internal racks that can accommodate up to nine mouse cages each.
- (1) Sterilizing Cylinder (size & type to your specifications).
- (1) Single-tier sterilizing cylinder transfer cart/trolley with two-way locking wheels.
- (1) Transfer sleeve for connecting sterilizing cylinder to transfer port.
- (1) roll of Mylar film.
- (6) rolls Mylar tape.
- (1) Atomizer, hose, compressor and cart.
- (6) rolls yellow vinyl tape.
- (1) set of inside and outside replacement port caps.
- (1) replacement transfer sleeve.
- (1) TransDisk™.
- (1) roll vinyl patch tape.



18" Acrylic transfer port shown. Available in 12", 18" & 24" diameters. Also available in stainless steel & PVC.



Each internal cage racks can accommodate up to nine mouse cages.



Sterilizing cylinder to meet your size specifications.



15 mil Hypalon/CSM Dry Box Gloves with glove ring kit for attaching gloves to isolator (other types available).



Atomizer for sterilizing/decontamination of isolator. Includes: atomizer, hose, compressor and cart.



Transfer cart/trolley for CBC sterilizing cylinder(s) designed to safely transport sterilizing cylinder. (Double-tier cart shown)